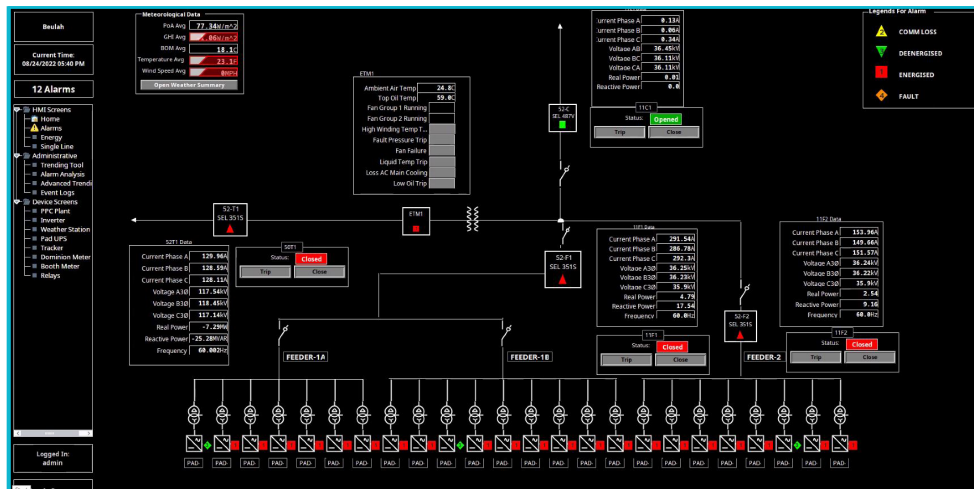


# Utility SCADA solutions

Empowering energy stakeholders to rapidly scale and confidently optimize clean energy portfolios, AlsoEnergy provides an edge-to-cloud platform that drives insightful decisions that improve portfolio performance. Our utility SCADA solution provides a supervisory control and data acquisition that enables real-time monitoring, control, and analysis of all power plant equipment and sensors, both at the edge and in the cloud, through seamless integration with PowerTrack. Built on the industry-leading Ignition platform, this utility SCADA solution offers a real-time HMI with tiered polling rates and built-in OPC-UA to connect to practically any PLC, and the ability to seamlessly connect to any SQL database.



Visualize data to extract key insights more easily with fully customizable charts



At-a-glance view of site operations

**Enabling monitoring and control of all clean energy equipment, this solution provides:**

- Real-time updates (<1-sec data)
- OPC-UA server native capability for 3rd parties
- Tiered polling rates
- Hot standby redundancy
- Standard and custom KPIs
- Long-term data storage
- At-a-glance device alarms, trending tools, and flexible data export
- Automatic data recovery from AlsoEnergy dataloggers after comms outage
- Drill down for relay, breaker, tracker, and inverter controls
- Integrated controls (communication with TSO) and control logs
- PPC mode change and custom input fields
- Alarm module (<1 sec activation time) with user-designated hierarchy



Efficiently program and manage plant controllers all in one place

The screenshot shows the 'Alarms' interface. It features a left sidebar with navigation options like '12 Alarms', 'Energy', 'Single Line', 'Trending Tool', 'Alarms Analysis', 'Event Log', 'Weather Station', 'PFD UPS', 'Damaged Mesh', 'Breaker Motor', and 'Relay'. The main area contains a table of alarms with the following columns: 'Active Time', 'Clear Time', 'Display Path', 'Alarm Name', 'Current State', and 'Export End Time'. The table lists various alarms such as 'Site DataRelayRTAC\_AlarmANN\_02\_Pressure\_High\_AlarmAlarm' and 'Site DataRelayRTAC\_AlarmANN\_01\_Storage\_Low\_AlarmAlarm'. The interface also includes filters for 'Show Active, Unacknowledged' and 'Show Cleared, Unacknowledged', and an 'Export Alarm Journal' button.

Prioritized alarms for existing hardware faults